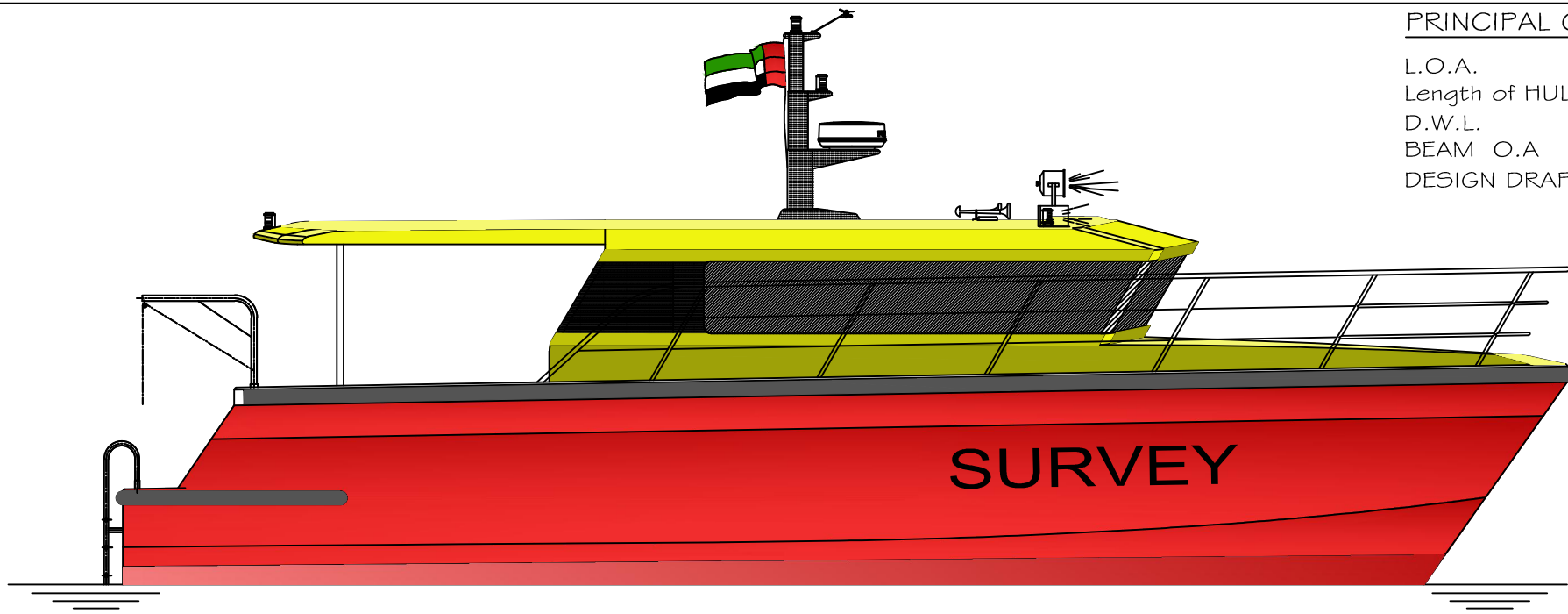
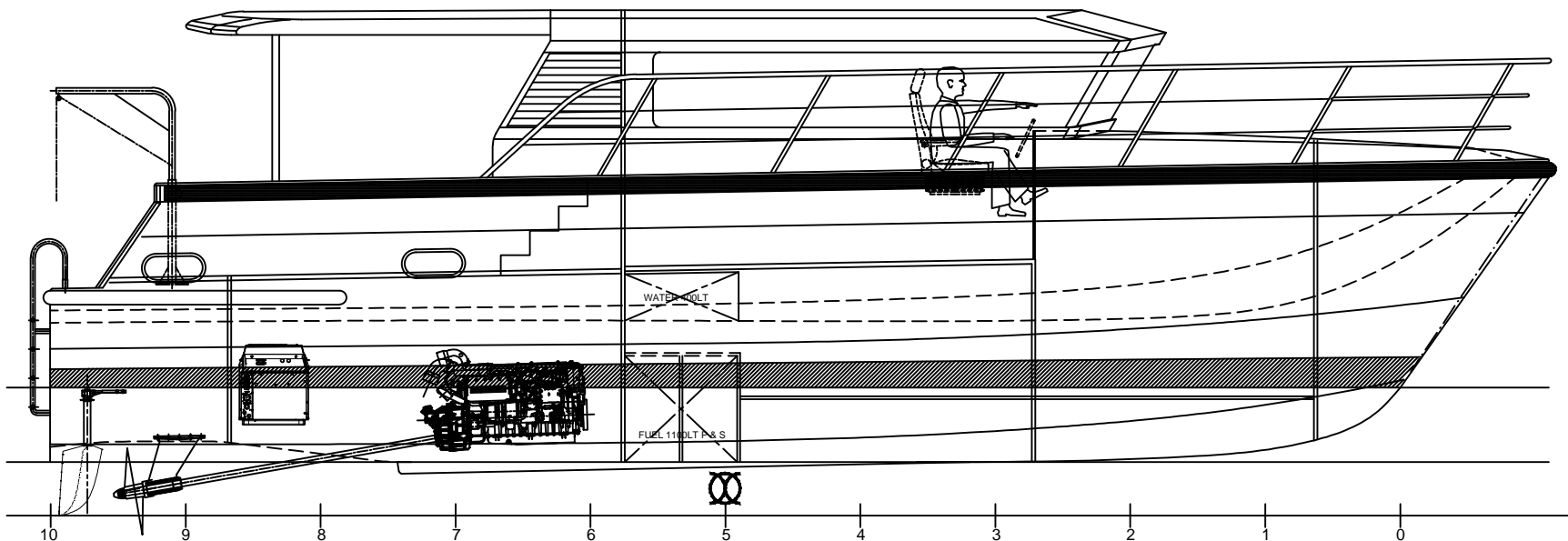


PRINCIPAL CHARACTERISTICS

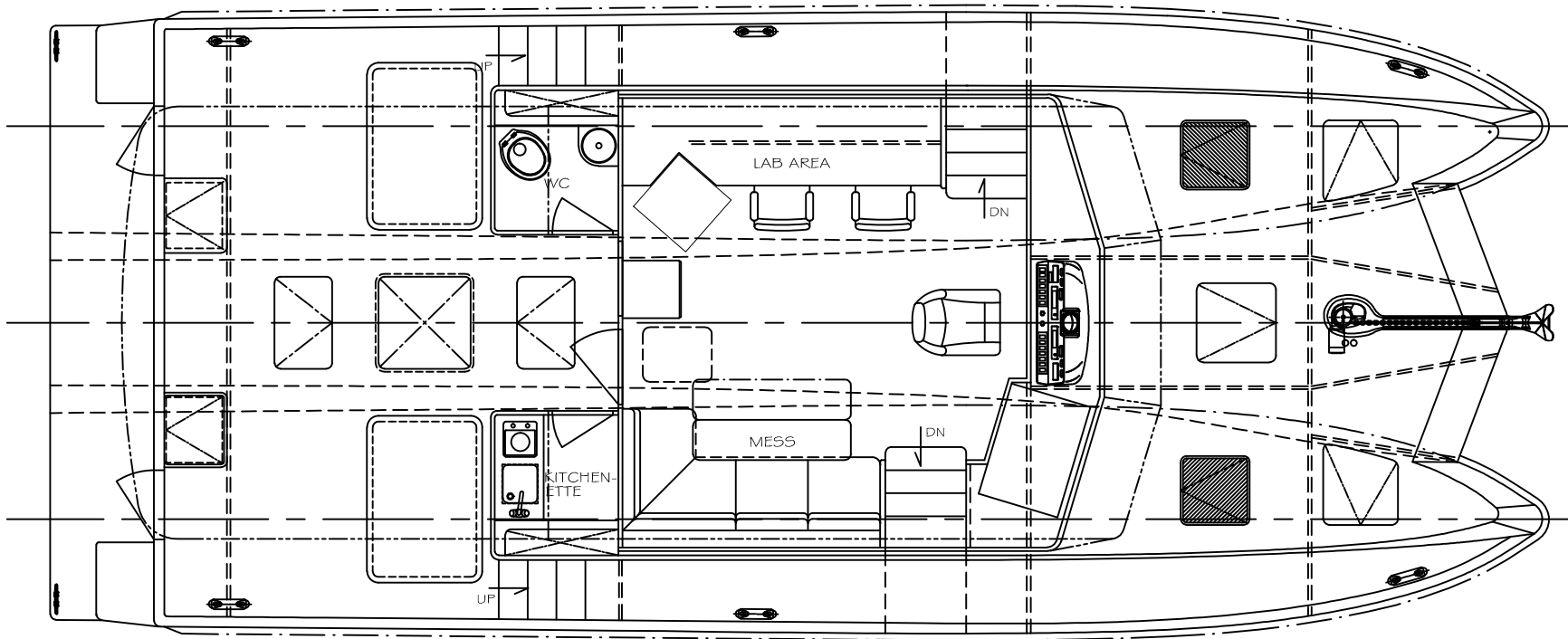
L.O.A.	13.00 M
Length of HULL	12.88 M
D.W.L.	11.66 M
BEAM O.A	5.62 M
DESIGN DRAFT	0.750 M



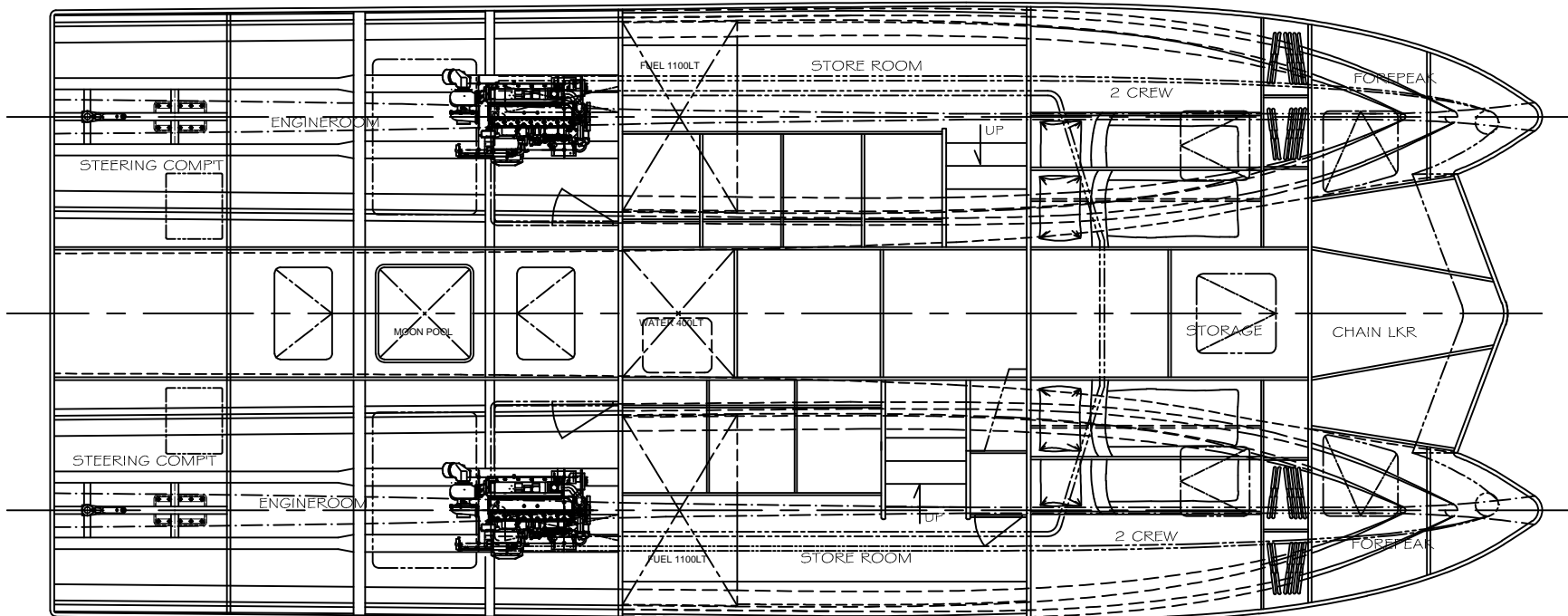
OUTBOARD PROFILE



INBOARD PROFILE



MAIN DECK PLAN



LOWER DECK PLAN

PROJECT		13.00M SURVEY BOAT CATAMARAN	
CLIENT			
SCALE		GENERAL ARRANGEMENT	
DATE		20.04.16	
DRAWN BY		JZE	
CHECKED		JZE	
APPROVED		JZE	
REVISIONS		1 of 1	
SCALE		1:30	